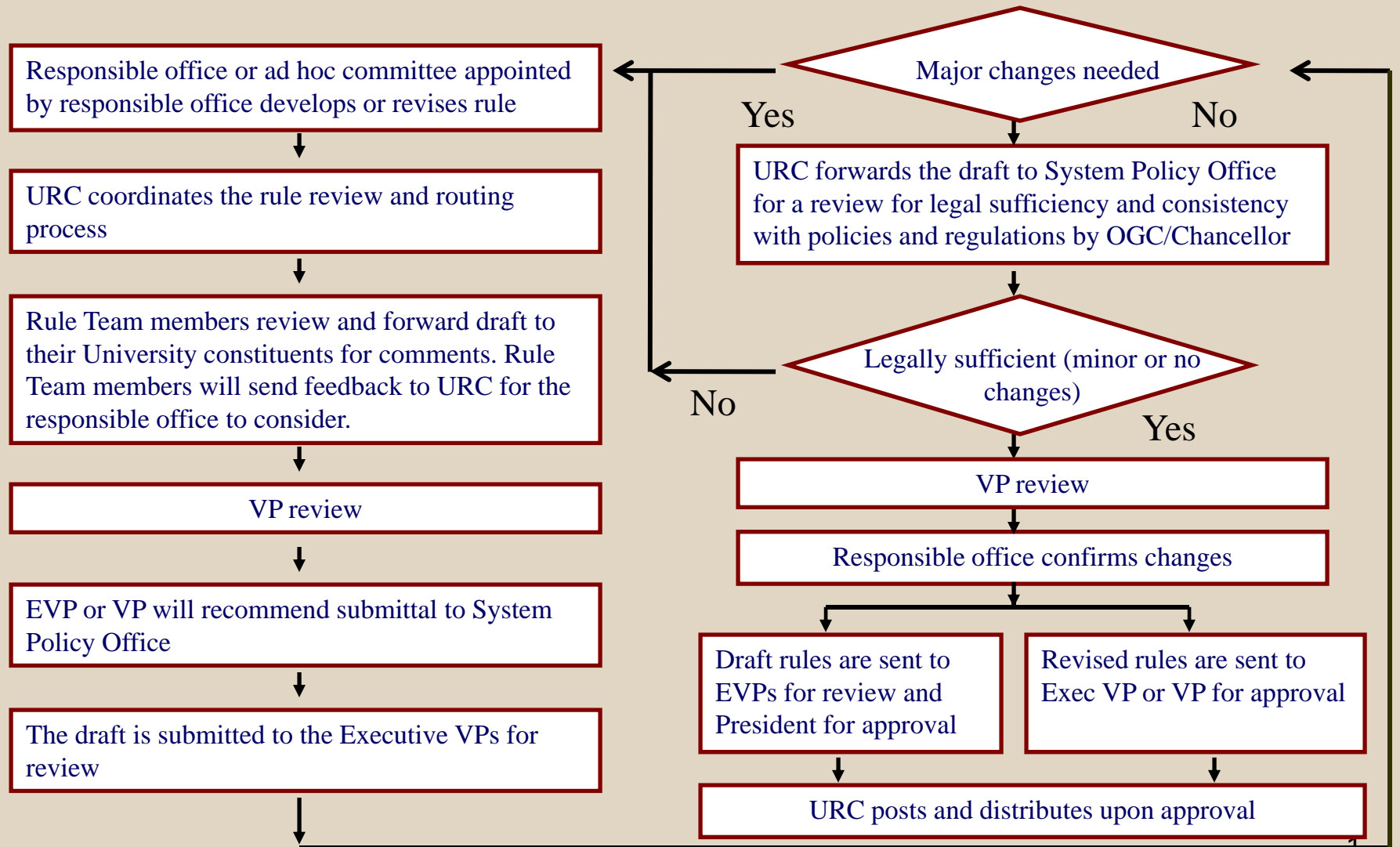


Routing new or rules with substantive revisions*

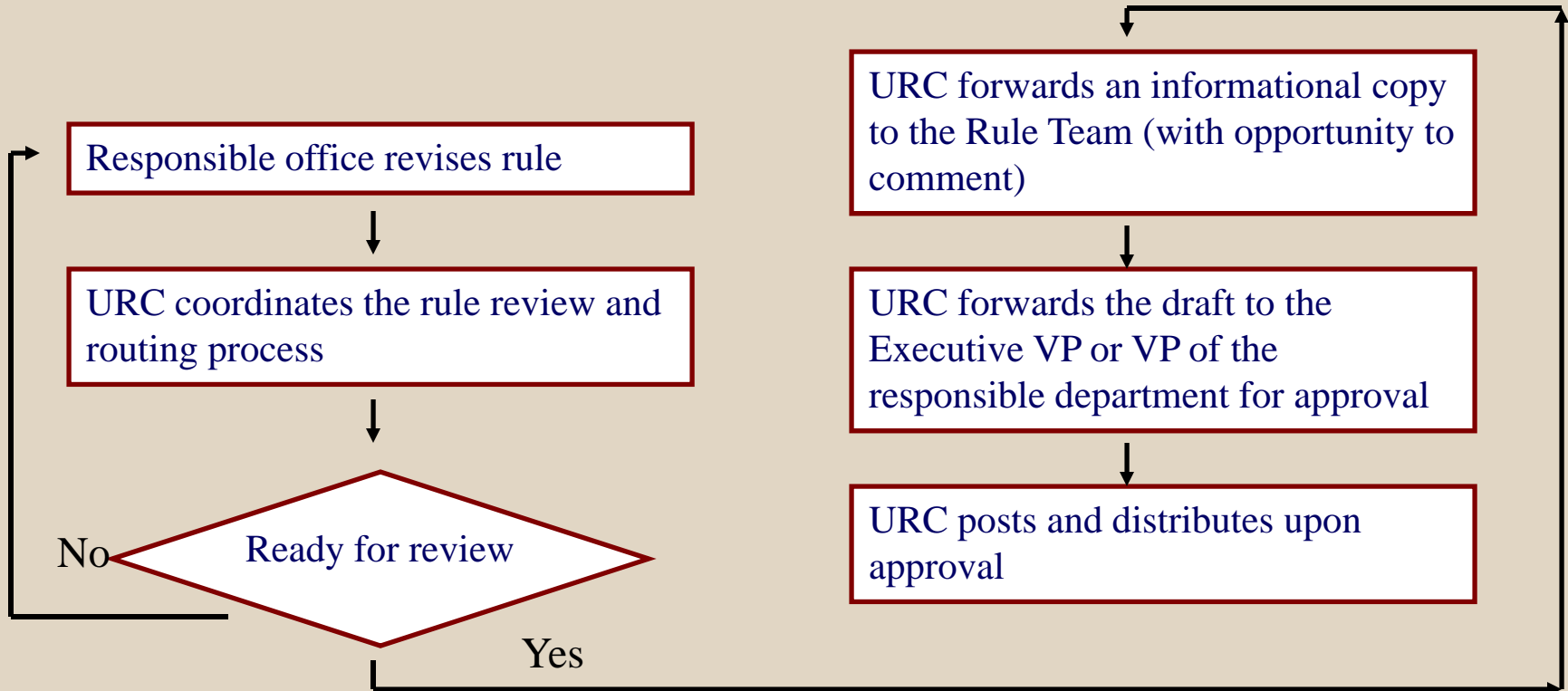


* If substantive revisions occur during the review process, the draft is subject to being rerouted.

Routing rules with minor revisions*

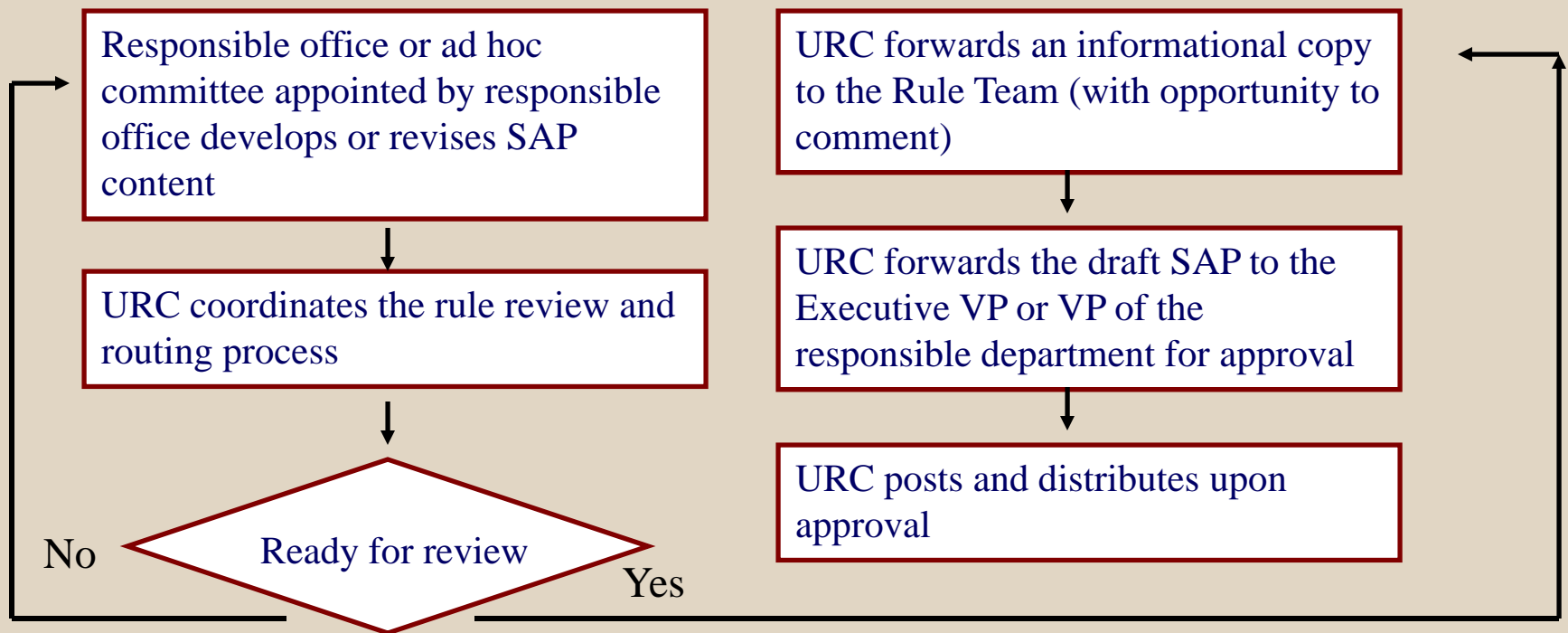


(limited to: changes in statutory code references, titles, and office of responsibility)



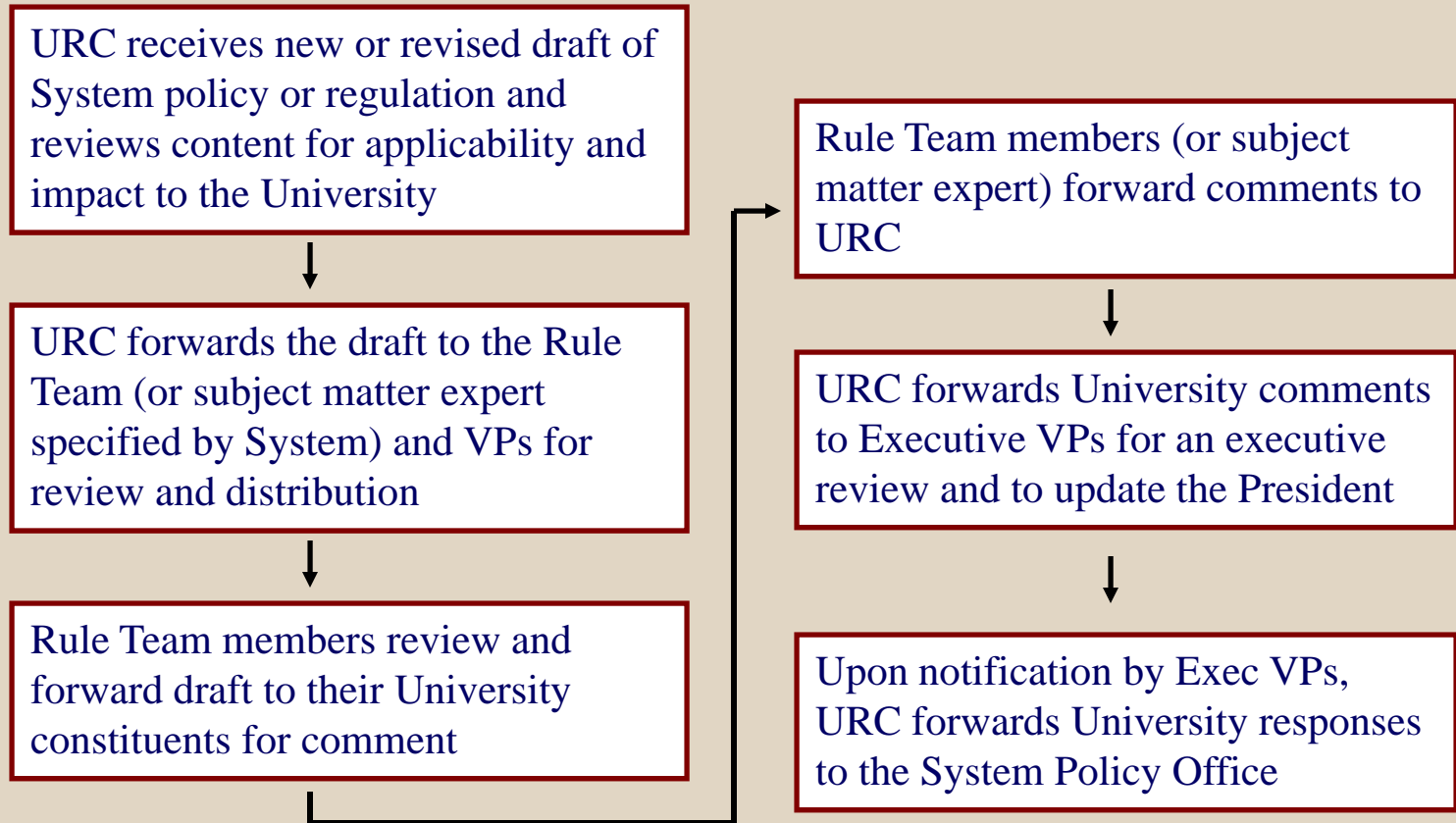
*No System review required

Routing new or revised Standard Administrative Procedures (SAPs)*



*No System review required

Routing new or revised draft System Policies and Regulations*



*Note: System Policies and Regulations typically have specific comment timelines